

SMART CONNECTION

SOFTWARE FOR MANAGING
JOB ORDERS



MANAGING PRODUCTION IN A SIMPLE, USER-FRIENDLY MANNER



SMARTCONNECTION IS A SOFTWARE PACKAGE FOR MANAGING JOB ORDERS WITHIN THE COMPANY - FROM THE GENERATION PHASE TO SCHEDULING AND ACTUAL PRODUCTION START-UP - IN JUST A FEW SIMPLE, INTUITIVE STEPS. THANKS TO SMARTCONNECTION, THE PRODUCTION SITE MACHINES CAN BE LINKED UP TO TRANSFORM THE COMPANY INTO A 4.0 ENTITY. SMARTCONNECTION IS A WEB-BASED SOLUTION THAT CAN BE USED BY ANY DEVICE.

THE MARKET EXPECTS

technologies that enable evolution, through a process of change which simplifies, controls and optimizes each stage of production. Taking a leading role in the Industry 4.0 revolution means knowing how to achieve maximum efficiency.

BIESSE RESPONDS

with **technological solutions** that enhance and support the technical ability and knowledge of processes and materials, aimed at small and large companies in the sector that want to increase performance and make their factories more efficient.

SMART CONNECTION

Powered by Retuner



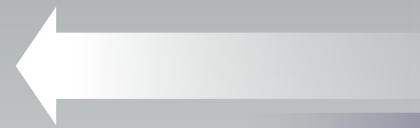
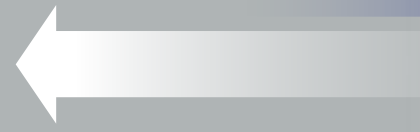
MANAGE
THE JOB ORDER

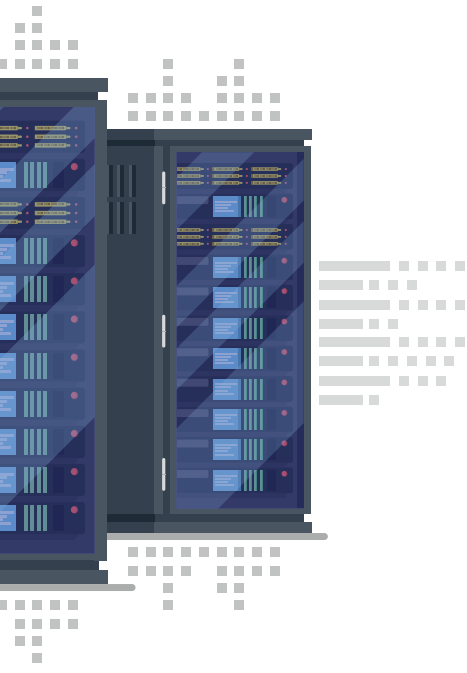
PLAN

SCHEDULE

WORK

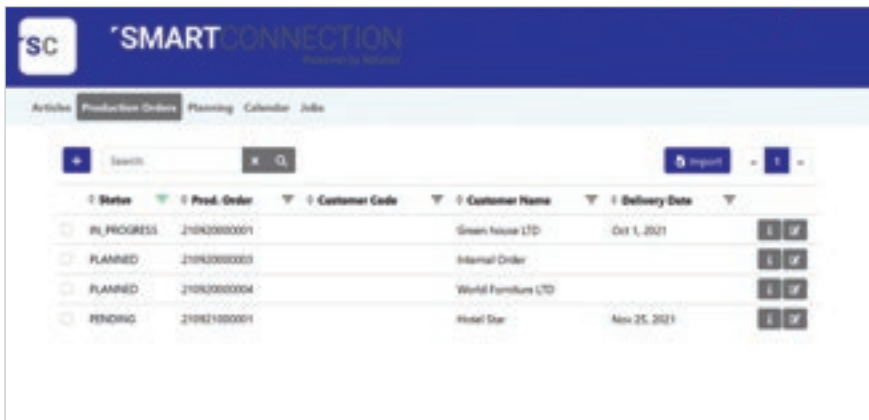
MANAGING PRODUCTION IN A SIMPLE, USER-FRIENDLY MANNER





EXTREMELY USER-FRIENDLY

1. JOB ORDER MANAGEMENT



Status	Prod. Order	Customer Code	Customer Name	Delivery Date	
IN PROGRESS	210K2000001		Green House LTD	Oct 1, 2021	[E] [F]
PLANNED	210K2000003		Internal Order		[E] [F]
PLANNED	210K2000004		World Furniture LTD		[E] [F]
PENDING	210K2100001		Hotel Dan	Nov 25, 2021	[E] [F]



Smartconnection, a solution that works independently from the programming software, lets you create job orders containing products and bills of materials with variations, the relative machining operations, the drawings and any necessary notes.

2. PLANNING



Production Order	Code	Article Code	Name	Qty	Unit
210K2100001	210K2100004		Sup	10	PCS



For every job order created, the various work phases belonging to one machine, several machines or a number of assembly or quality control stations. Job orders are planned on the basis of the time needed and the resources available in the company.

3. CALENDAR



SmartConnection enables you to plan the various job order phases on the machines or manual machining stations, thanks to a calendar.

The calendar shows the link between the various phases in graphic format. If a machine/station is "occupied", the job order cannot be fulfilled and the evolving status of the machine/station is indicated.

4. MACHINING OPERATIONS

The screenshot shows the SMARTCONNECTION machining operations table. At the top, there is a 'Description' section with 'Directory Part Program' and 'Rover A 1532'. Below this, there is a 'Processing' section with search and filter options. The main table lists various machining operations with columns for 'Code', 'Phase', 'Status', 'Product Code', 'Product', 'Prod. Order', 'Prod. Order Status', 'Customer', and 'Completion Start'. The table contains several rows of data, with the last row highlighted in green, indicating a 'PL_PROGRESS' status.

Code	Phase	Status	Product Code	Product	Prod. Order	Prod. Order Status	Customer	Completion Start
21002000003	CNC Machining	PLANNED	21002000003	Top	21002000001	PL_PROGRESS	Green House LTD	Sep 22, 2021
21002000004	CNC Machining	PLANNED	21002000003	Legs	21002000001	PL_PROGRESS	Green House LTD	Sep 22, 2021
21002000013	CNC Machining	PLANNED	21002000008	Door	21002000002	PLANNED	Internal Order	
21002000018	CNC Machining	PLANNED	21002000018	Shelf	21002000004	PLANNED	World Furniture LTD	
21002000009	CNC Machining	PL_PROGRESS	21002000008	Top	21002000003	PLANNED	Hotel Star	34% Sep 22, 2021



Once the part-program or configuration has been sent and the production process has been launched, the web app allows you to check the progress in real time, calculating the times, pieces and non conformities of each single machining operation.

In addition to the standard SmartConnection functions, SMARTCONNECTIONPRO also lets you:

- track the machine status, calculate the KPIs linked to production and machine use,

- add the Biese B_OPTI and B_NEST optimisers, plan the stages thanks to a calendar with advanced functions based on the machining operation records,

- split and join together job orders to ensure a more efficient use of the materials and job loading in production.

