

# B\_CABINET

SOFTWARE EVOLUTION



 **BIESSE**

# NO LIMITS ON DESIGN

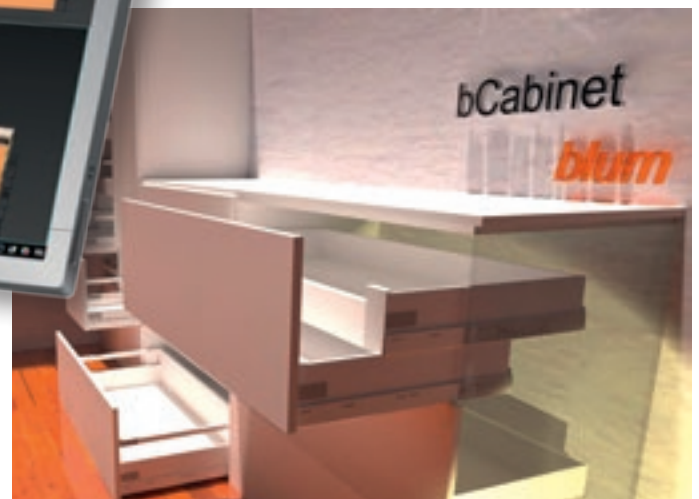
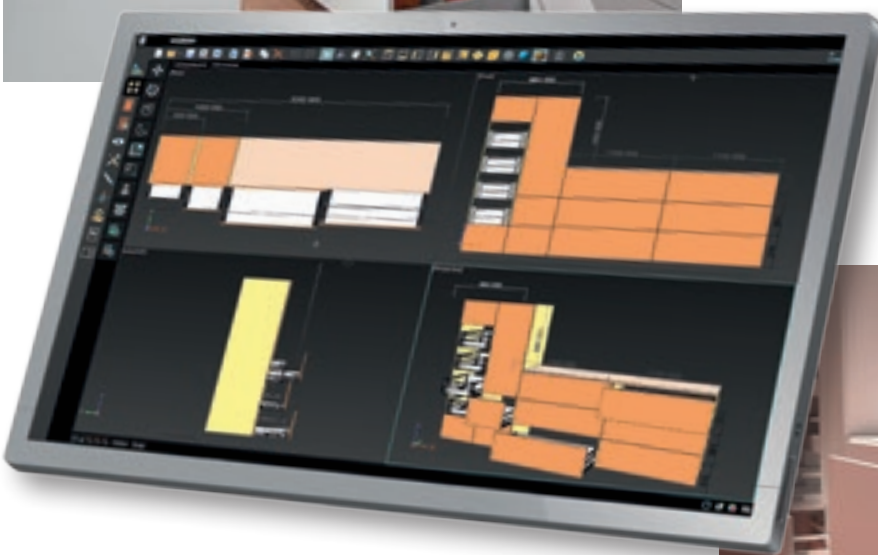
## BCABINET

software for interior design has evolved thanks to the integration with BLUM, a leading company in the furniture accessories market. The advantages that derive from this integration are incomparable. Furniture design with Blum components becomes simple and efficient, with no compromises in terms of design.

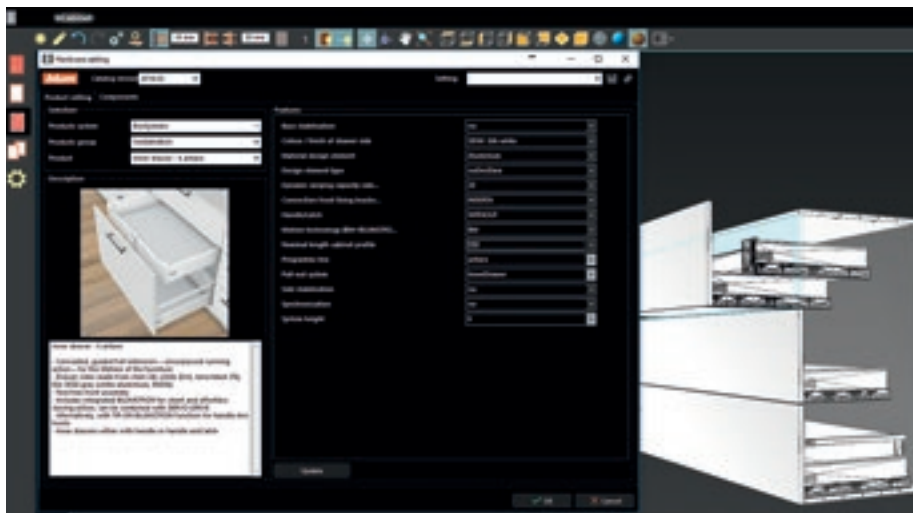


Information on the accessories is always updated and free of errors, coming directly from Blum's catalogue.

**EARLY INTEGRATION OF BLUM  
INNOVATIONS FROM DATE OF MARKET  
LAUNCH POSSIBLE**



No errors during the planning phase thanks to Blum's continuous monitoring of data.

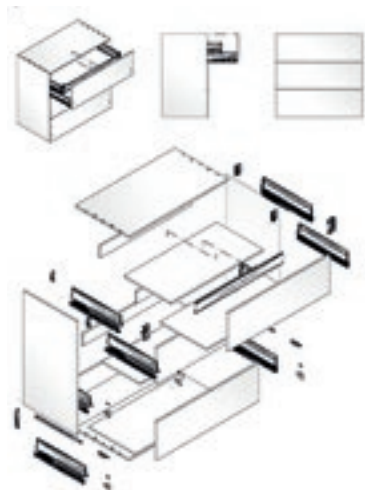


The Blum catalogue can be accessed directly through the BCABINET interface, guaranteeing maximum functionality and ease of use.

Assembly information and Hardware fit reports.

Time necessary for purchase, insertion, and updating of data are considerably reduced

**INFORMATION ALWAYS AVAILABLE AND CONSTANTLY UPDATED**



Element Name	Element Description	Quantity	Width	Depth	Height
BLUM	Galley head	2	462	12	12
4041002	Latching drawer nylon	1	25	14,80	7,2
4012204	Fullsliding plate	8	32	12,80	12,80
4021400	TWICEBICE back flange bracket	1	47,2	20,80	16,2
BLUM_Z30000	TWICEBICE back flange bracket	1	47,2	20,80	16,2
4134402	TWICEBICE back flange bracket	3	47,2	20,80	16,2
BLUM_Z30000	TWICEBICE back flange bracket	3	47,2	20,80	16,2
4050000	TWICEBICE BLUNCTION roller	1	44,2	32,42	43,8
BLUM_378-450	TWICEBICE BLUNCTION roller	1	44,2	32,42	43,8
4034004	TWICEBICE BLUNCTION roller	1	54,2	32,42	43,8
BLUM_378-500	TWICEBICE BLUNCTION roller	1	54,2	32,42	43,8
4033204	TWICEBICE BLUNCTION roller	2	54,2	41,22	43,8
BLUM_378-500	TWICEBICE BLUNCTION roller	2	54,2	41,22	43,8
4040010	TWICEBICE drawer side, height	1	400	48,67	120,80
BLUM_378-450	TWICEBICE drawer side, height	1	400	48,67	120,80
4004000	TWICEBICE drawer side, height	3	500	48,67	120,80
BLUM_378-500	TWICEBICE drawer side, height	3	500	48,67	120,80
BLUM_Z30-304	TWICEBICE front flang bracket	8	46,24	12	42
4440010	TWICEBICE front flang, height P	1	85,00	41,2	132,634
BLUM_Z30-304	TWICEBICE front flang, height P	1	85,00	41,2	132,634
BLUM_Z30-102	TWICEBICE front section for steel	1	102	23,8	86,2
4440000	TWICEBICE longslat galley rail	1	540,7	17,80	29,2
BLUM_Z30-102	TWICEBICE longslat galley rail	1	540,7	17,80	29,2

